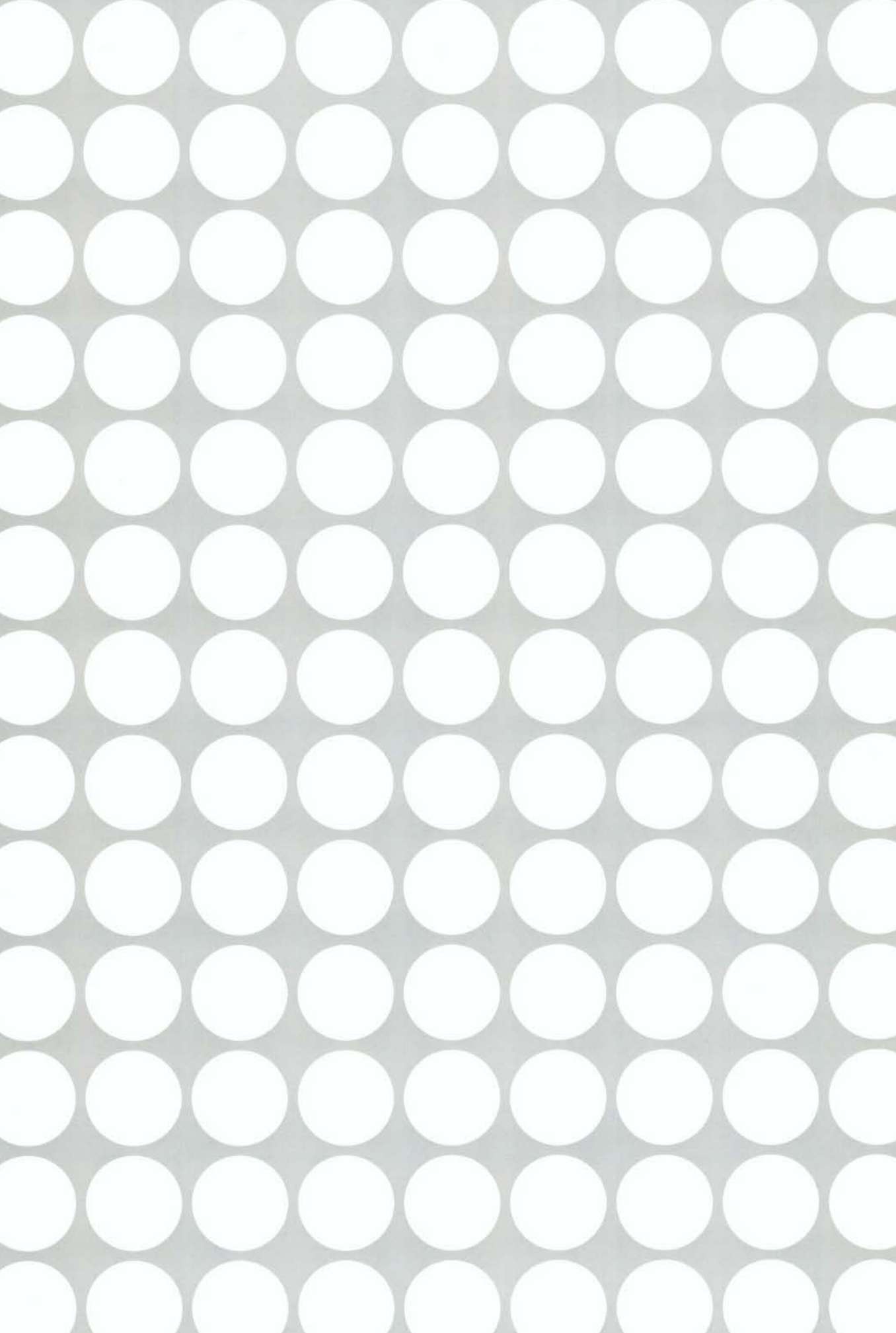






凸  
凹

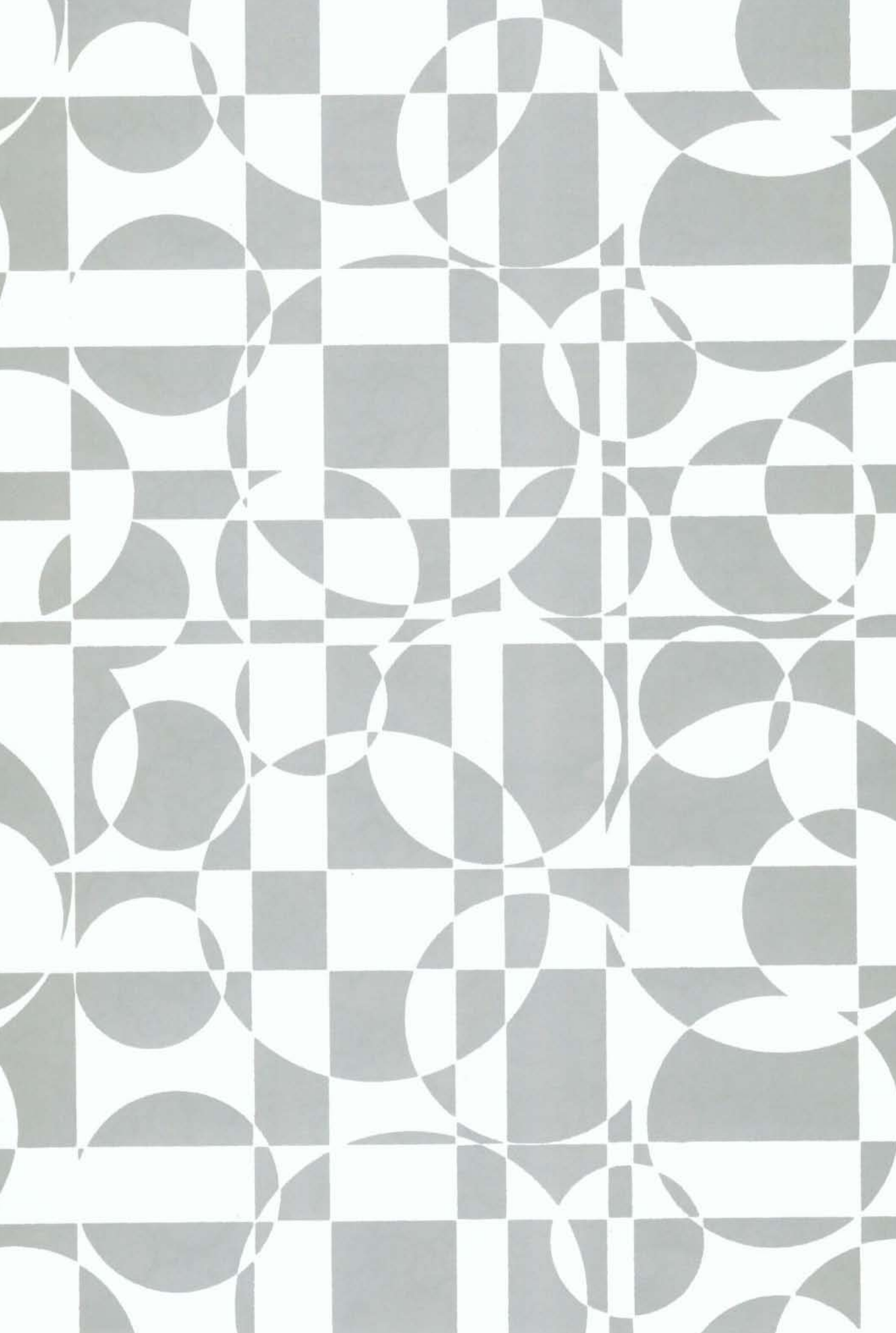


 凸 金屬原色 Metallic Surface  
 凹 蝕刻完成 Etching-Finished Surface

圓形系列

**EL-257**

■ 凸  
□ 凹

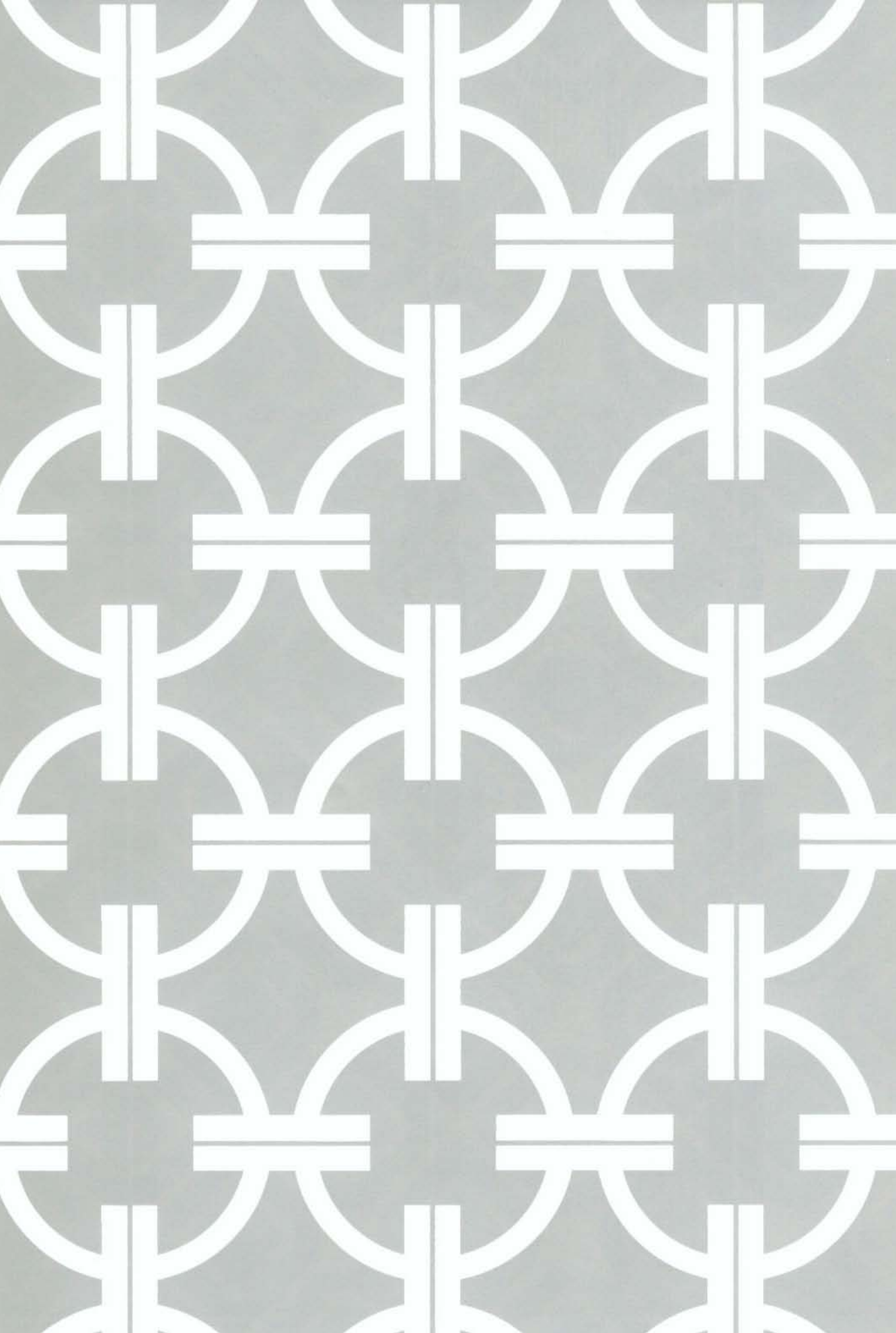


■ 凸 金屬原色 Metallic Surface  
□ 凹 蝕刻完成 Etching-Finished Surface

圓形系列

**EL-266**

■ 凸  
□ 凹



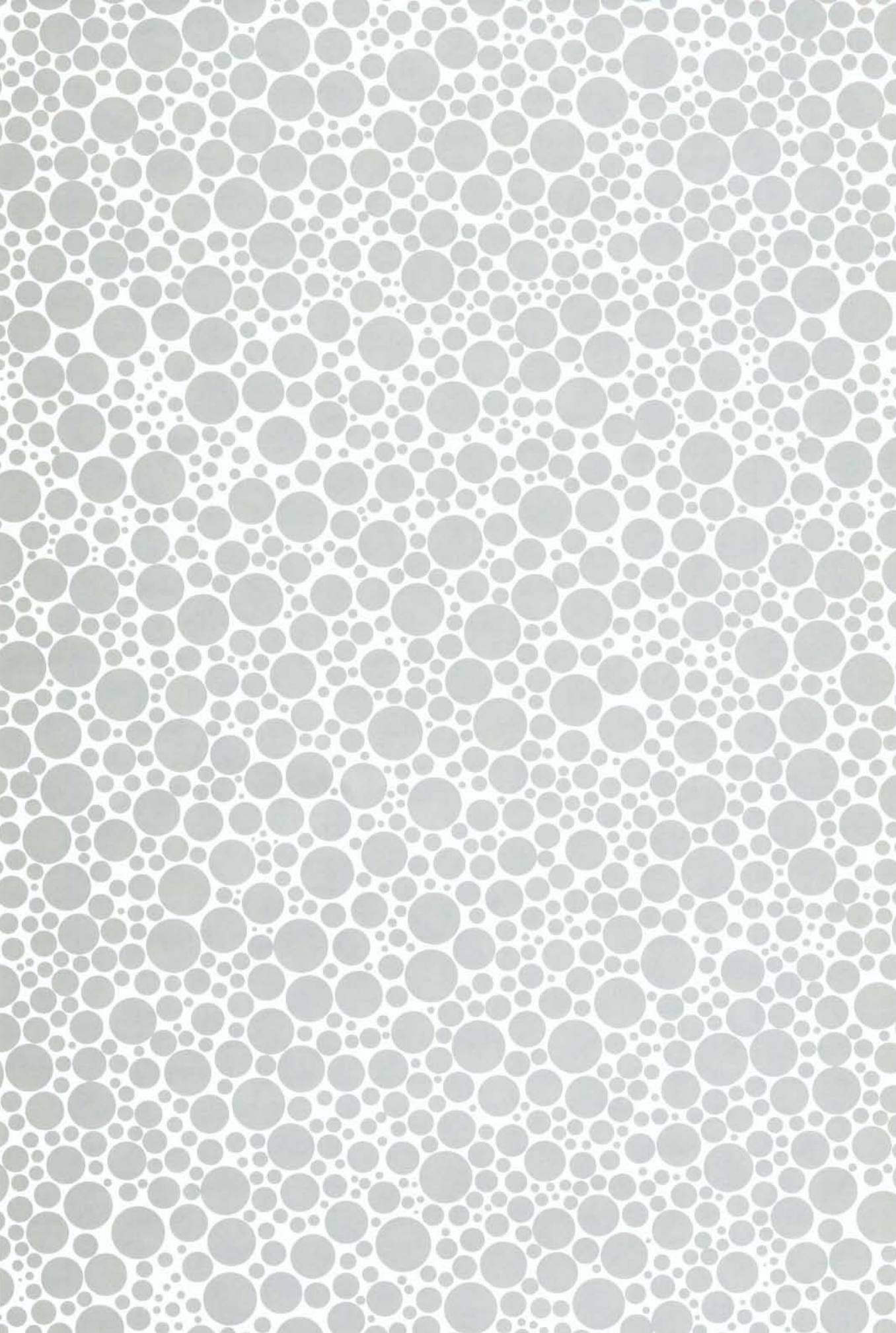
■ 凸 金屬原色 Metallic Surface  
□ 凹 蝕刻完成 Etching-Finished Surface



圓形系列

**EL-272**



凸面  
凹面



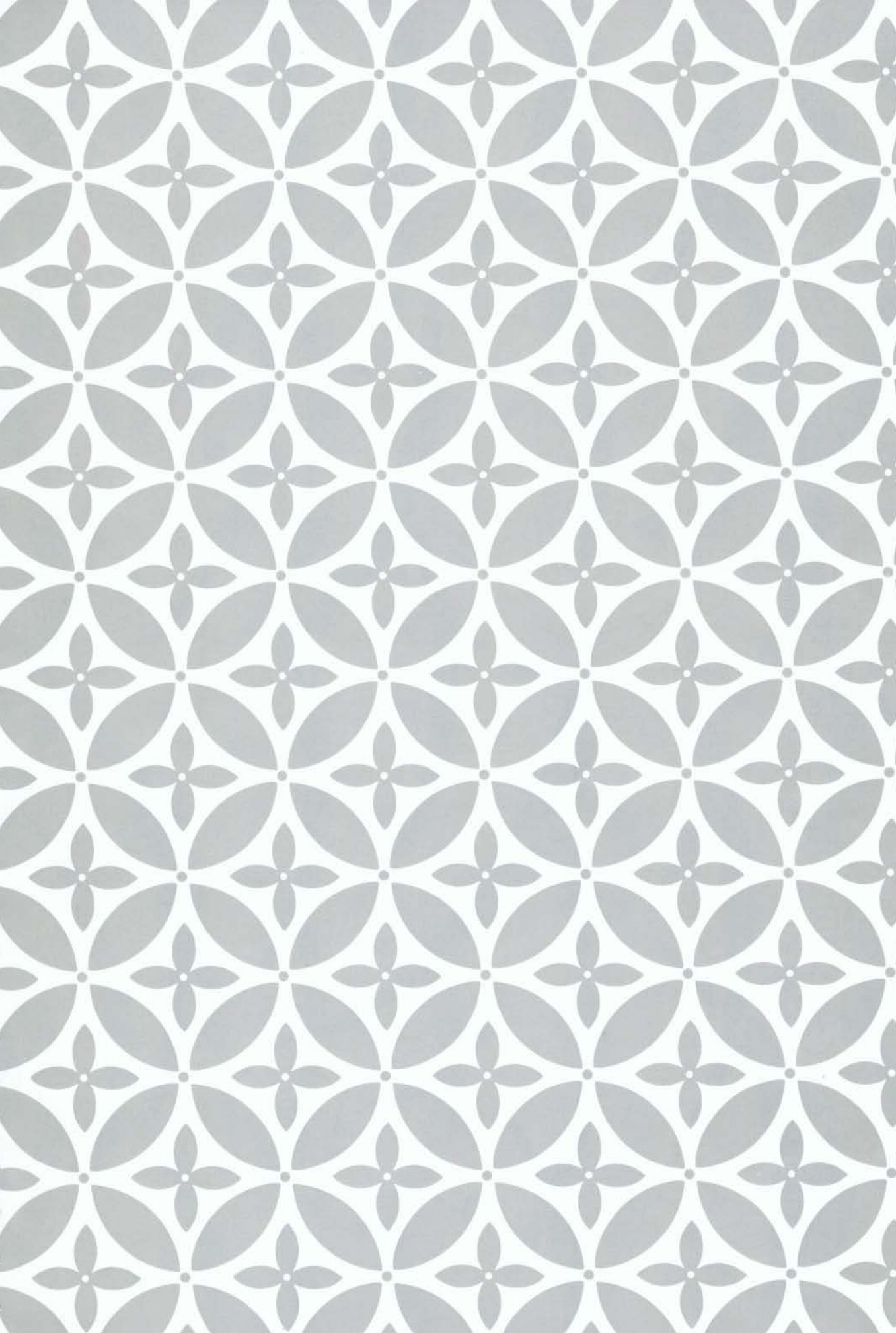
 凸 金屬原色 Metallic Surface  
 凹 蝕刻完成 Etching-Finished Surface


圓形系列

**EL-290**



凸  
凹



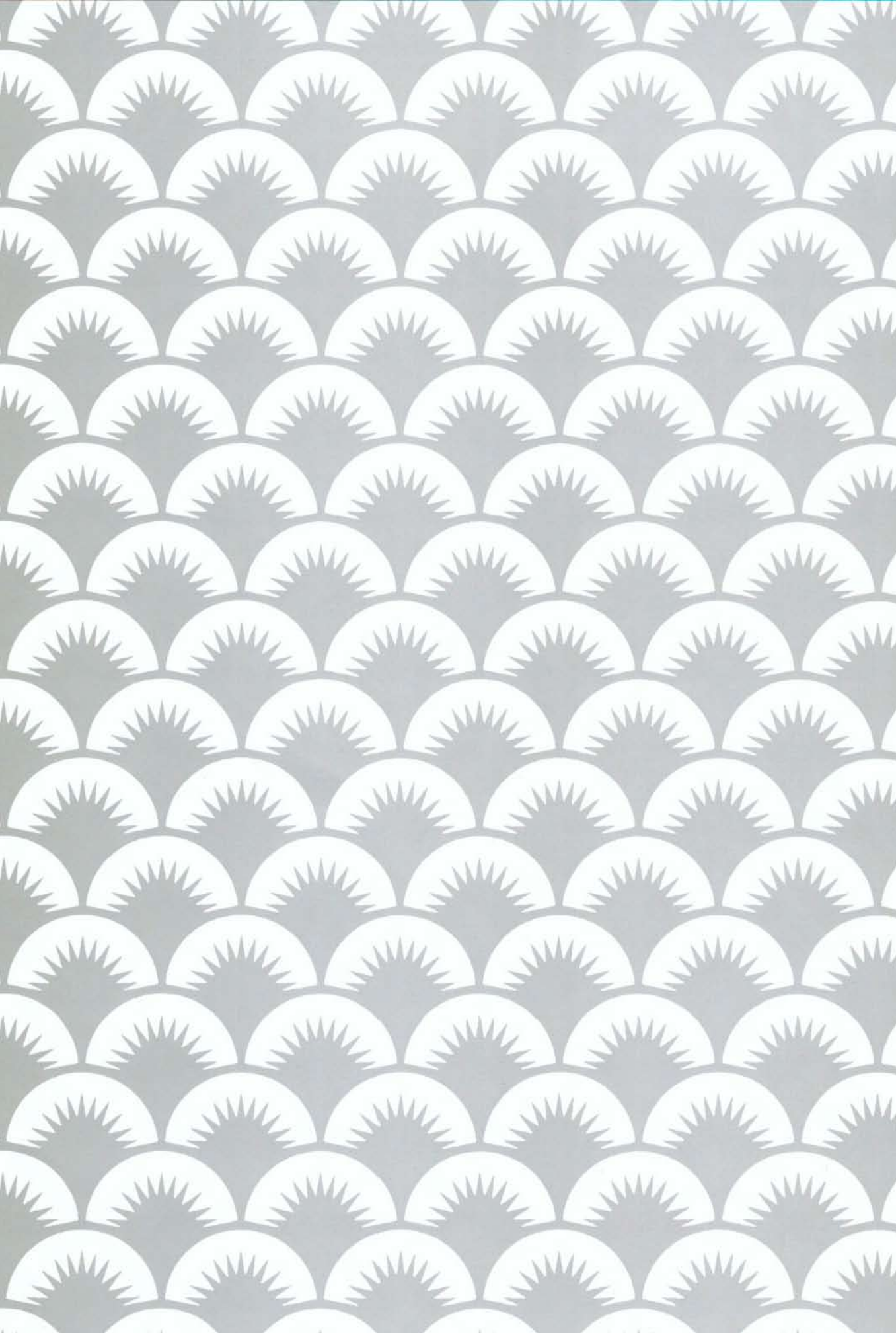
 凸 金屬原色 Metallic Surface  
 凹 蝕刻完成 Etching-Finished Surface



圓形系列

**EL-344**



凸  
凹



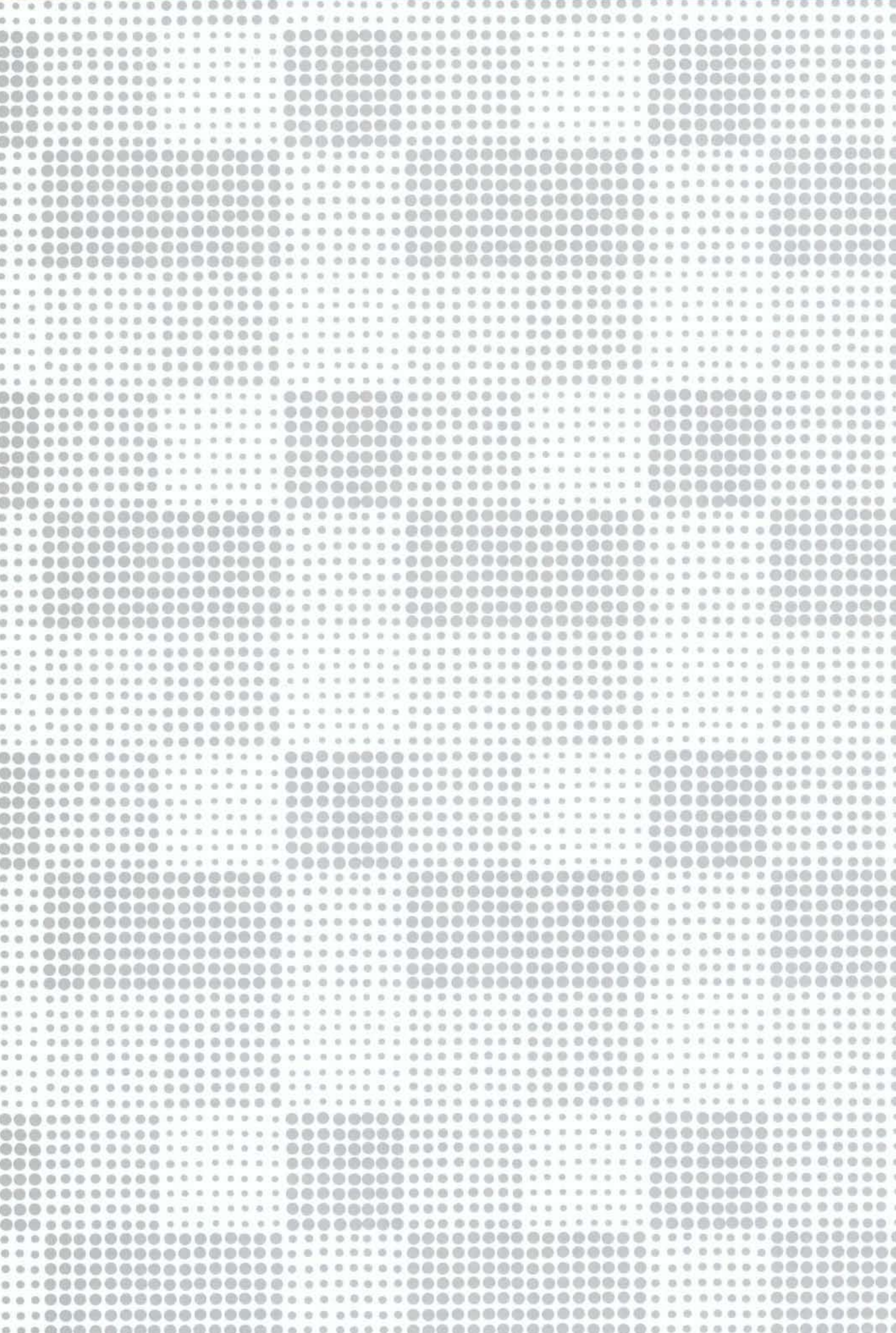
-  凸 金屬原色 Metallic Surface
-  凹 蝕刻完成 Etching-Finished Surface



圓形系列

**EL-334**



凸面  
凹面



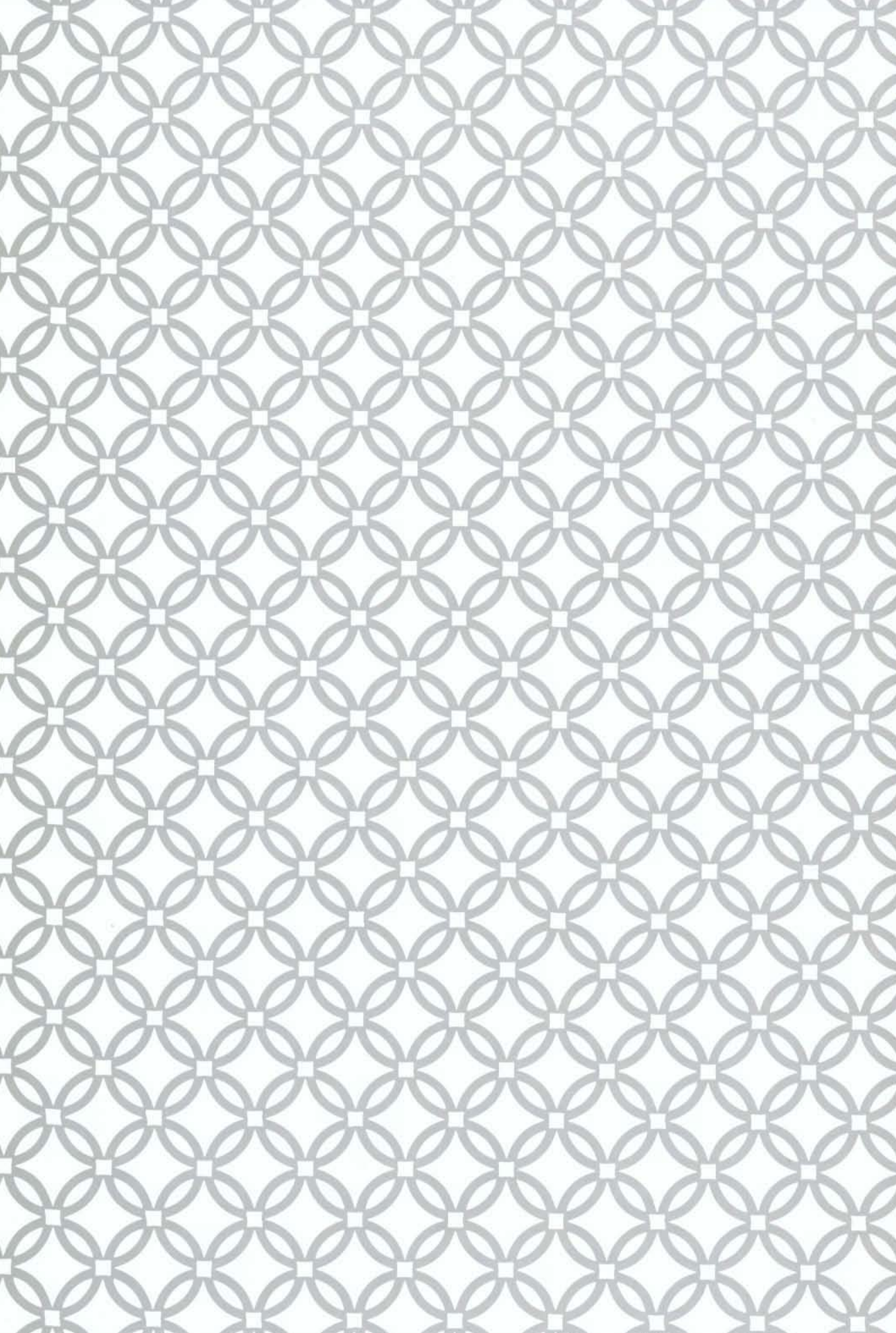
 凸 金屬原色 Metallic Surface  
 凹 蝕刻完成 Etching-Finished Surface



圓形系列

**EL-324-1**



凸  
凹



-  凸 金屬原色 Metallic Surface
-  凹 蝕刻完成 Etching-Finished Surface



圓形系列

**EL-318**





凸面  
凹面

 凸 金屬原色 Metallic Surface  
 凹 蝕刻完成 Etching-Finished Surface

圓形系列

**EL-321**

■ 凸  
□ 凹



■ 凸 金屬原色 Metallic Surface  
□ 凹 蝕刻完成 Etching-Finished Surface

圓形系列

**EL-357**