

  
凸面

凹面



凸 金屬原色 Metallic Surface



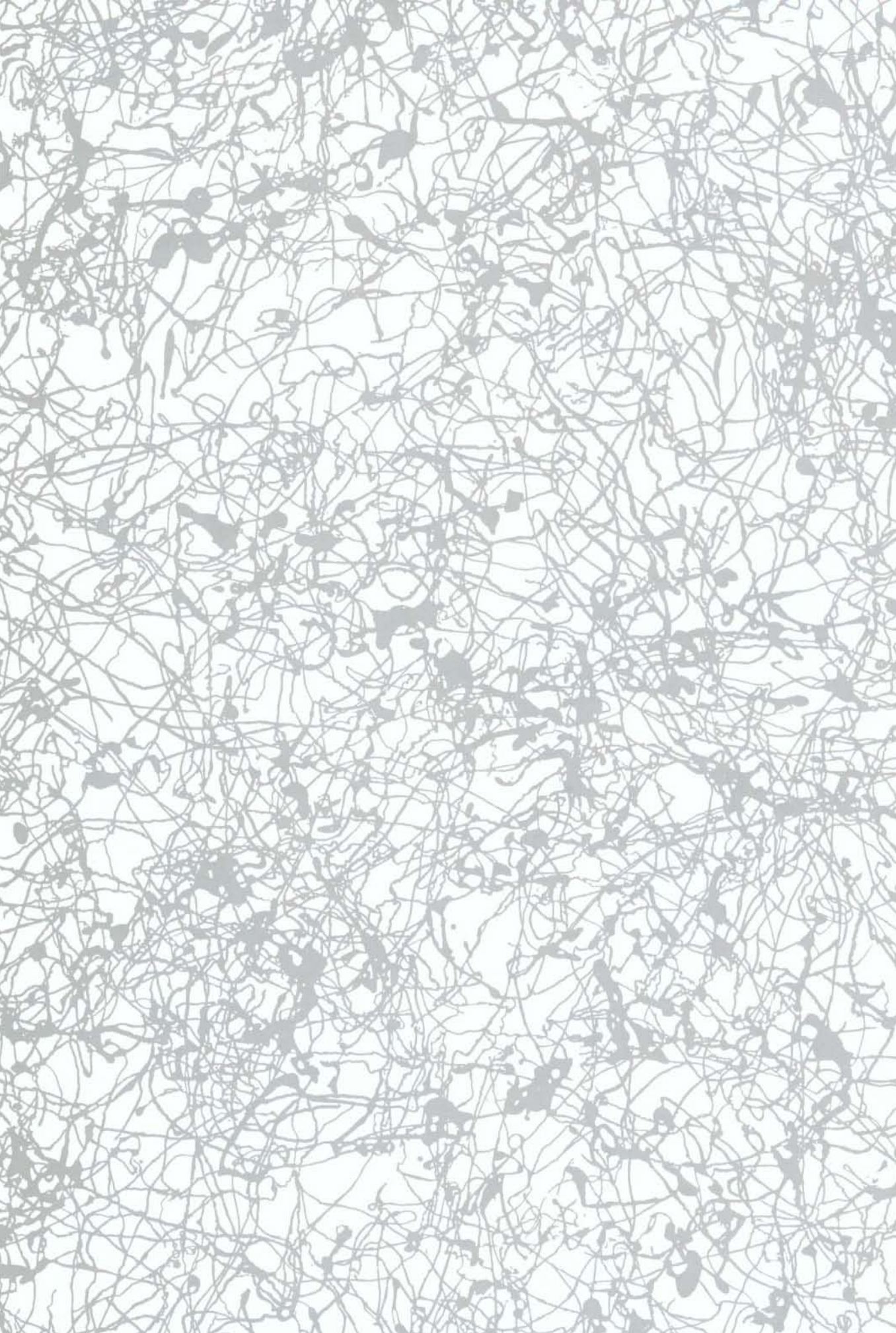
凹 蝕刻完成 Etching-Finished Surface



藝術系列

**EL-306**



凸面  
凹面



 凸 金屬原色 Metallic Surface  
 凹 蝕刻完成 Etching-Finished Surface

藝術系列

**EL-310**

凸面  
凹面

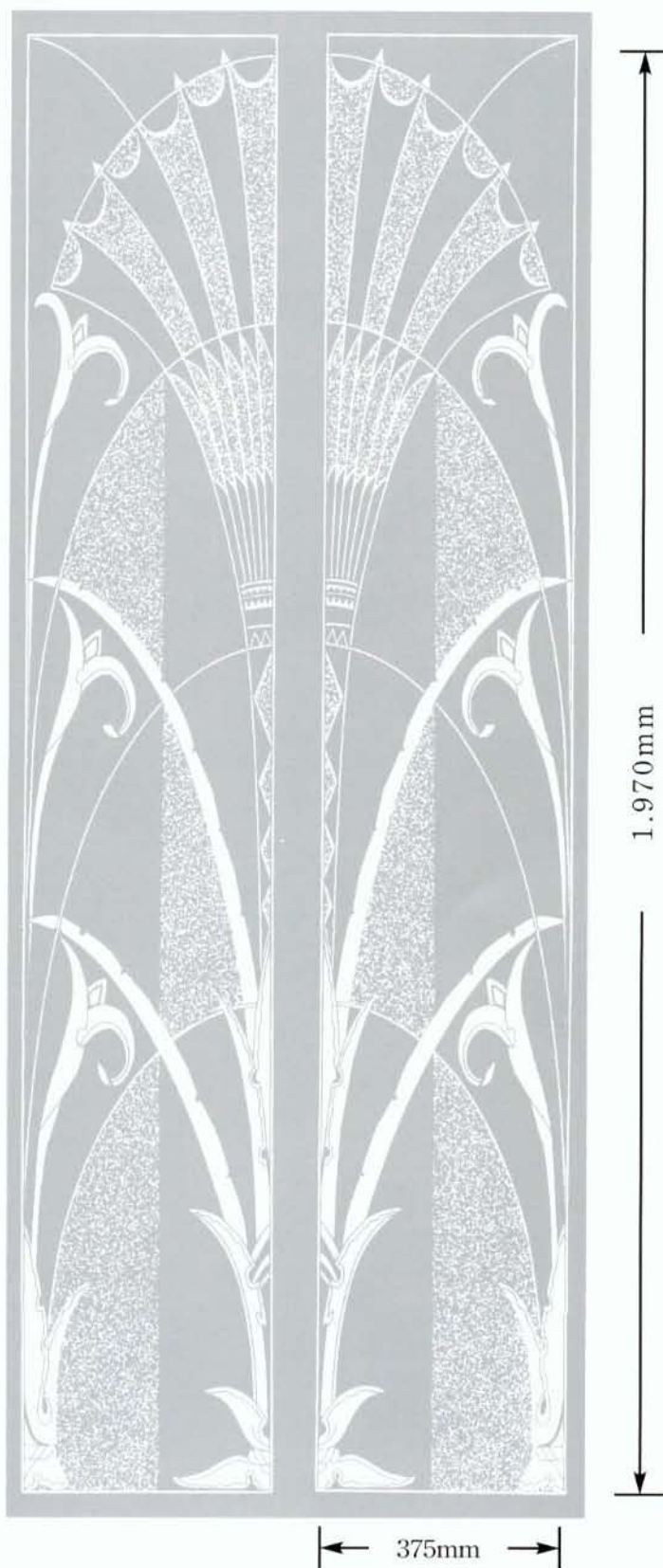


- 凸 金屬原色 Metallic Surface
- 凹 蝕刻完成 Etching-Finished Surface

藝術系列

**EL-311**

■ 凸  
□ 凹

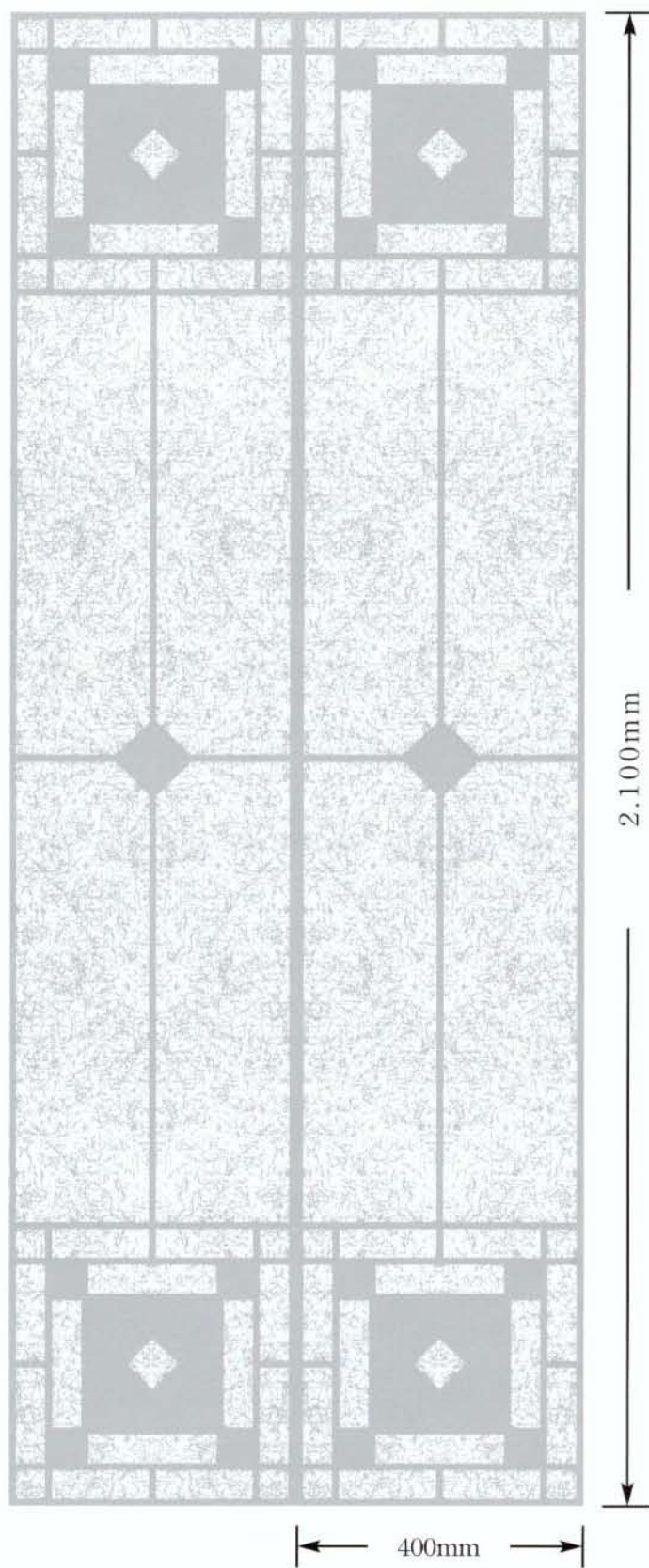


■ 凸 金屬原色 Metallic Surface  
□ 凹 蝕刻完成 Etching-Finished Surface

藝術系列

**EL-313**

凸面  
凹面



凸 金屬原色 Metallic Surface  
凹 蝕刻完成 Etching-Finished Surface


藝術系列

**EL-314**



凸面  
凹面



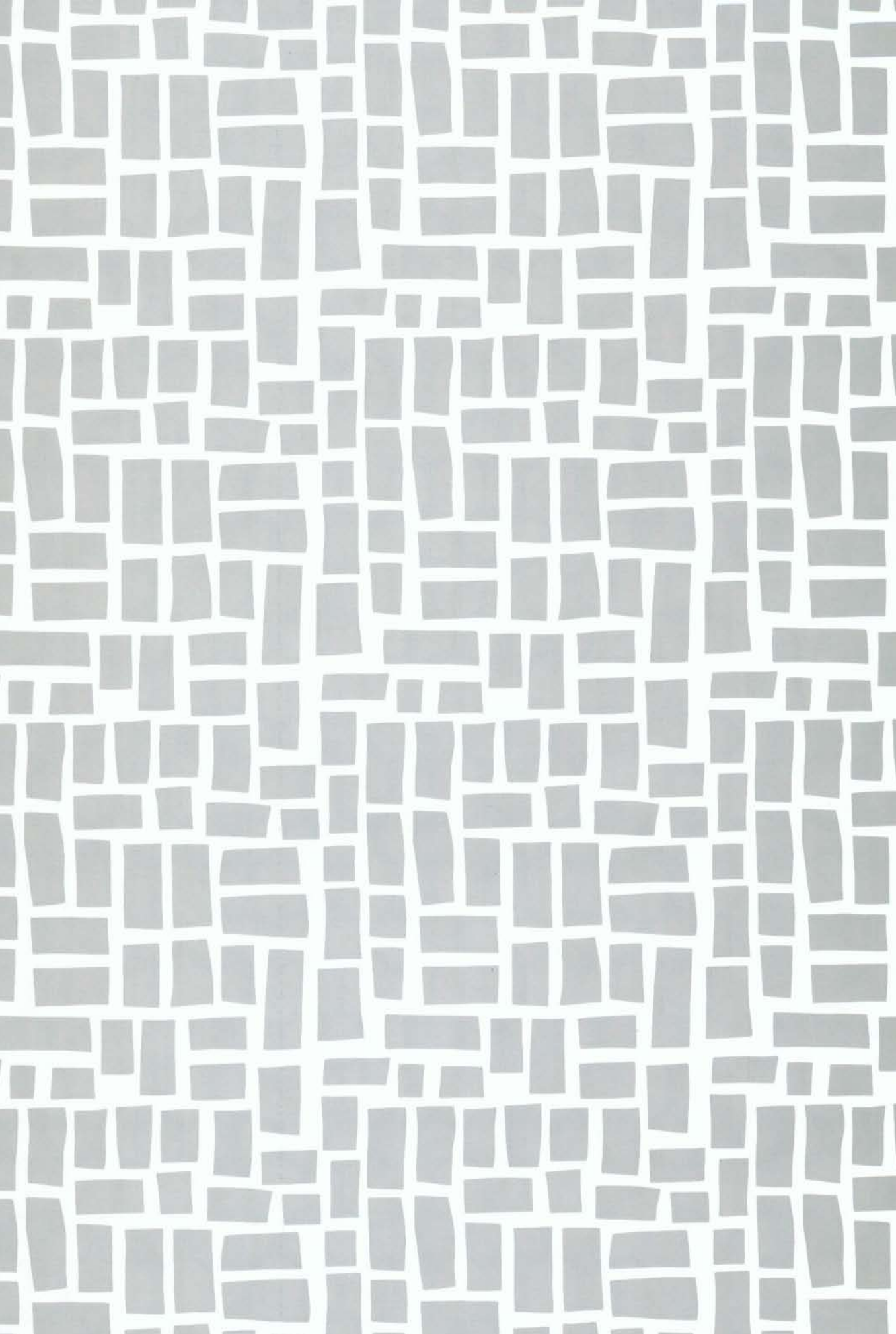
 凸 金屬原色 Metallic Surface  
 凹 蝕刻完成 Etching-Finished Surface


藝術系列

**EL-320**



凸面  
凹面



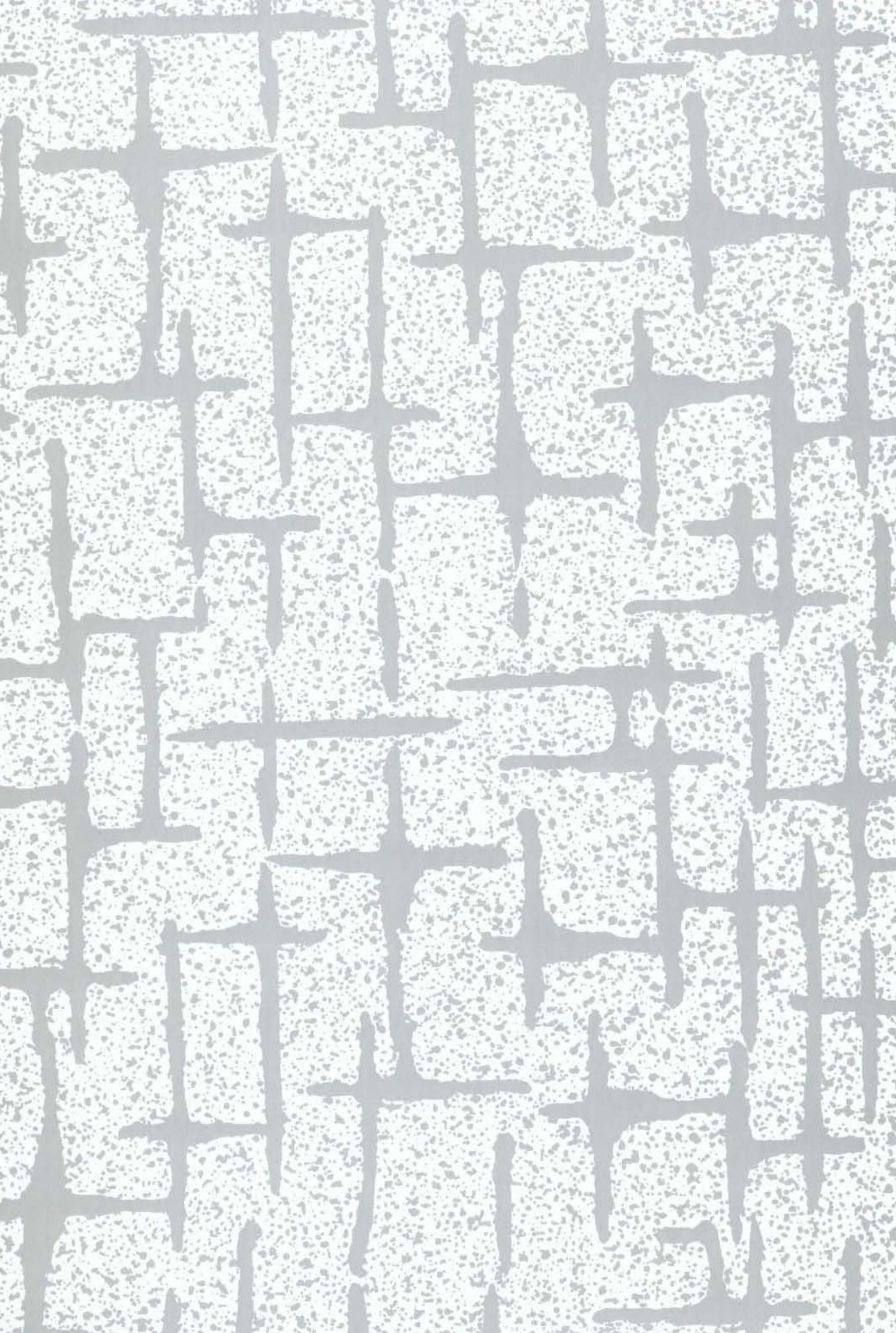
-  凸 金屬原色 Metallic Surface  
 凹 蝕刻完成 Etching-Finished Surface



藝術系列

**EL-338**



凸面  
凹面



-  凸 金屬原色 Metallic Surface
-  凹 蝕刻完成 Etching-Finished Surface

藝術系列

**EL-348**